

Date \_\_\_\_\_  
 AVFI Sales REP \_\_\_\_\_  
 Customer Signature \_\_\_\_\_

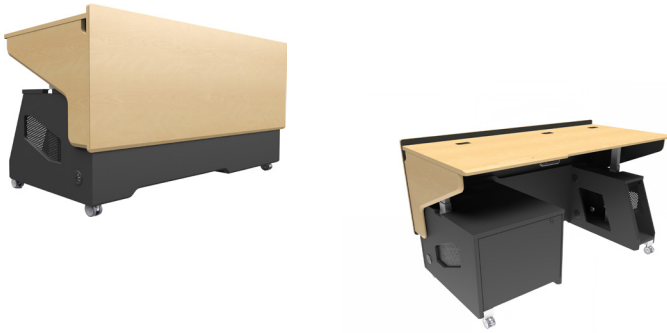
Quote No. \_\_\_\_\_  
 Customer No. \_\_\_\_\_  
 AVFI No. \_\_\_\_\_

Office Use Only

To generate your order form, please refer to the information provided below to insert the alphabetic and/or numeric code in the respective category boxes. Please note that without this filled out Order Form, your purchase **cannot** be processed.

| 1 Product Model | 2 Finish | 3 Chargeable Accessories (One Code Per Box) | 4 Custom Cutouts |
|-----------------|----------|---|------------------|
| <b>DSL38</b>    |          |   |                  |

**1 Product Model**



**2 Choose Product Finish**

**Standard Finishes** (Ships within 1-15 business days)



Code **FMT**  
(Fusion Maple)



Code **BRT**  
(Baroque)



Code **ART**  
(Aria)



Code **EBT**  
(Ebony)

**Optional Finishes** (Ships within 20 business days)



**RCT**



**HCT**



**CLT**



**CJT**



**ELT**



**CWT**



**BAT**



**SGT**

\* **Cutout Required** (Extra Charges will apply)

**3 Chargeable Accessories (Check all that apply)**

- Code **00** No Accessories
- Code **E1** **PB** 6 Outlet Power Bar .....Qty \_\_\_\_\_
- \* Code **EF** **CHGQIB** Wireless Charging Station Black .....Qty \_\_\_\_\_
- Code **K1** **C900S** Single Monitor Arm.....Qty \_\_\_\_\_
- Code **K2** **C900D** Dual Monitor Arm .....Qty \_\_\_\_\_
- Code **P2** **PCH730** PC Holder.....Qty \_\_\_\_\_
- \* Code **K3** **PLM1022** LCD Monitor Mount.....Qty \_\_\_\_\_
- \* Code **D3** **FM3** Countdown Timer and Clock.....Qty \_\_\_\_\_
- \* Code **D2** **LIGHT-18** Adjustable Gooseneck Light.....Qty \_\_\_\_\_
- \* Code **E3** **CUB3** Round Cable Well.....Qty \_\_\_\_\_
- \* Code **EB** **CUB4B** Round Cable Well.....Qty \_\_\_\_\_
- \* Code **EJ** **CUB22** Black 3 Module Panel.....Qty \_\_\_\_\_
- \* Code **EK** **CUBM3** 3 Module Power & Data Panel.....Qty \_\_\_\_\_
- \* Code **EL** **CUBM4** 4 Module Power & Data Panel.....Qty \_\_\_\_\_
- \* Code **D1** **MIC-18** Gooseneck Microphone.....Qty \_\_\_\_\_
- Code **J3** **DIR9200-8** 8U Drop-in Rack.....Qty \_\_\_\_\_
- Code **JO** **DIR9200-5** 5U Drop-in Rack.....Qty \_\_\_\_\_

**Comments (Please use this section to provide additional information)**

---

---

---

---

---

---

---

---

Custom Cutout Option on Page 2

**Notes**

**CAD Drawings/Symbols**

CAD drawings are available by request at sales@vegroun.net

**Custom Cutouts**

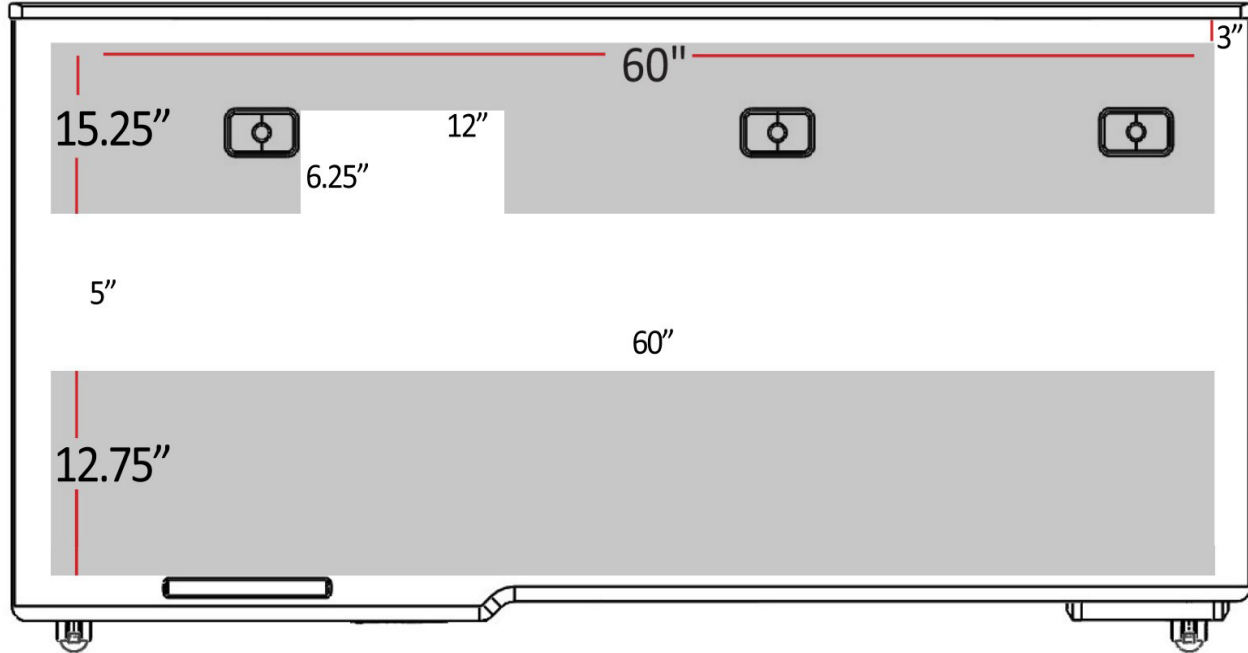
Estimated lead time within 20 business days from receipt of P.O. and signed drawings.

**Customizations**

Modifications to design such as shape and/or size variations have to be quoted on a per case basis and are applicable for quantities of 10+ only.

Please indicate custom cutout location on the drawing(s) below

4 Custom Cutout Option (Extra charges will apply)



Code **C0** No Custom Cutout

Code **CC** Custom Cutout (Specify on Cutout Area Above)

■ Cutout Area